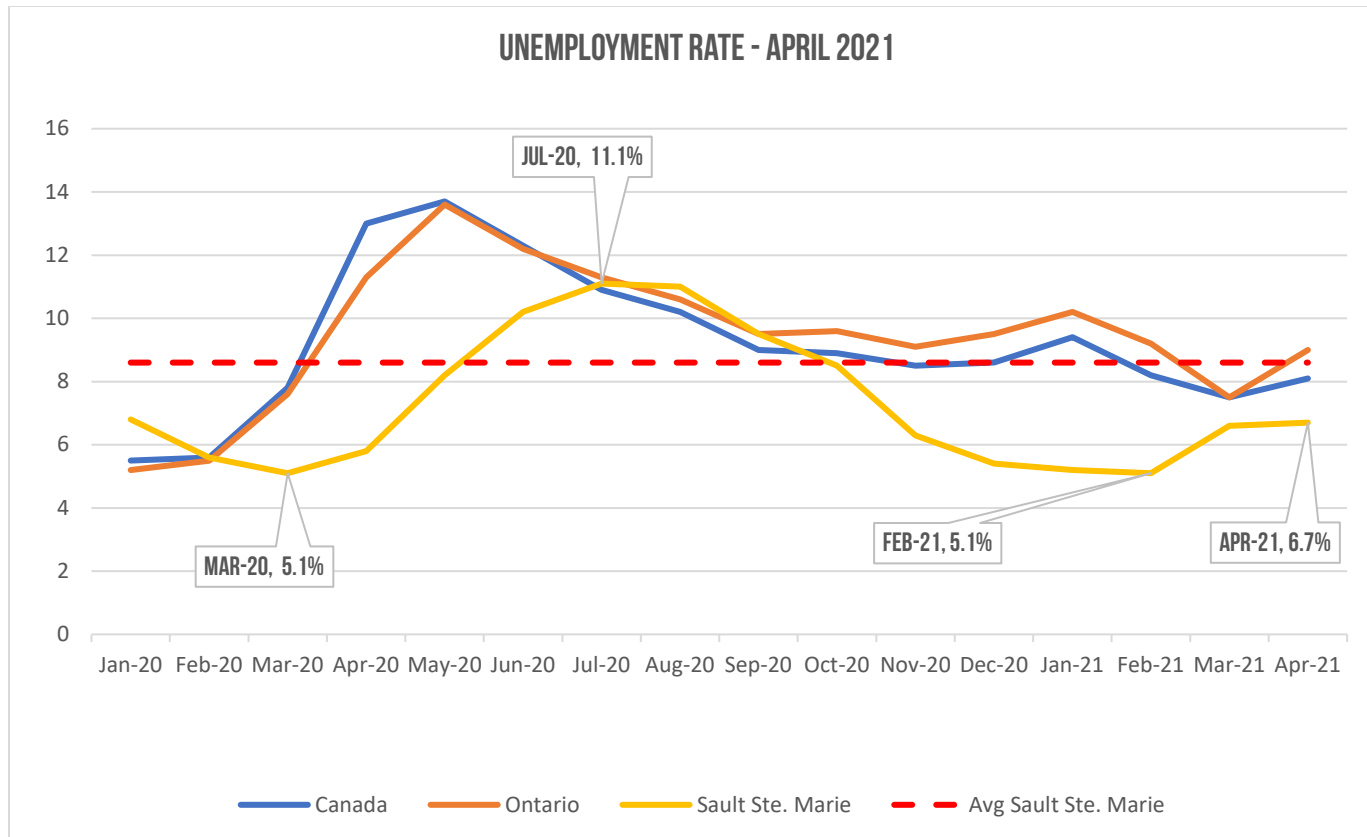
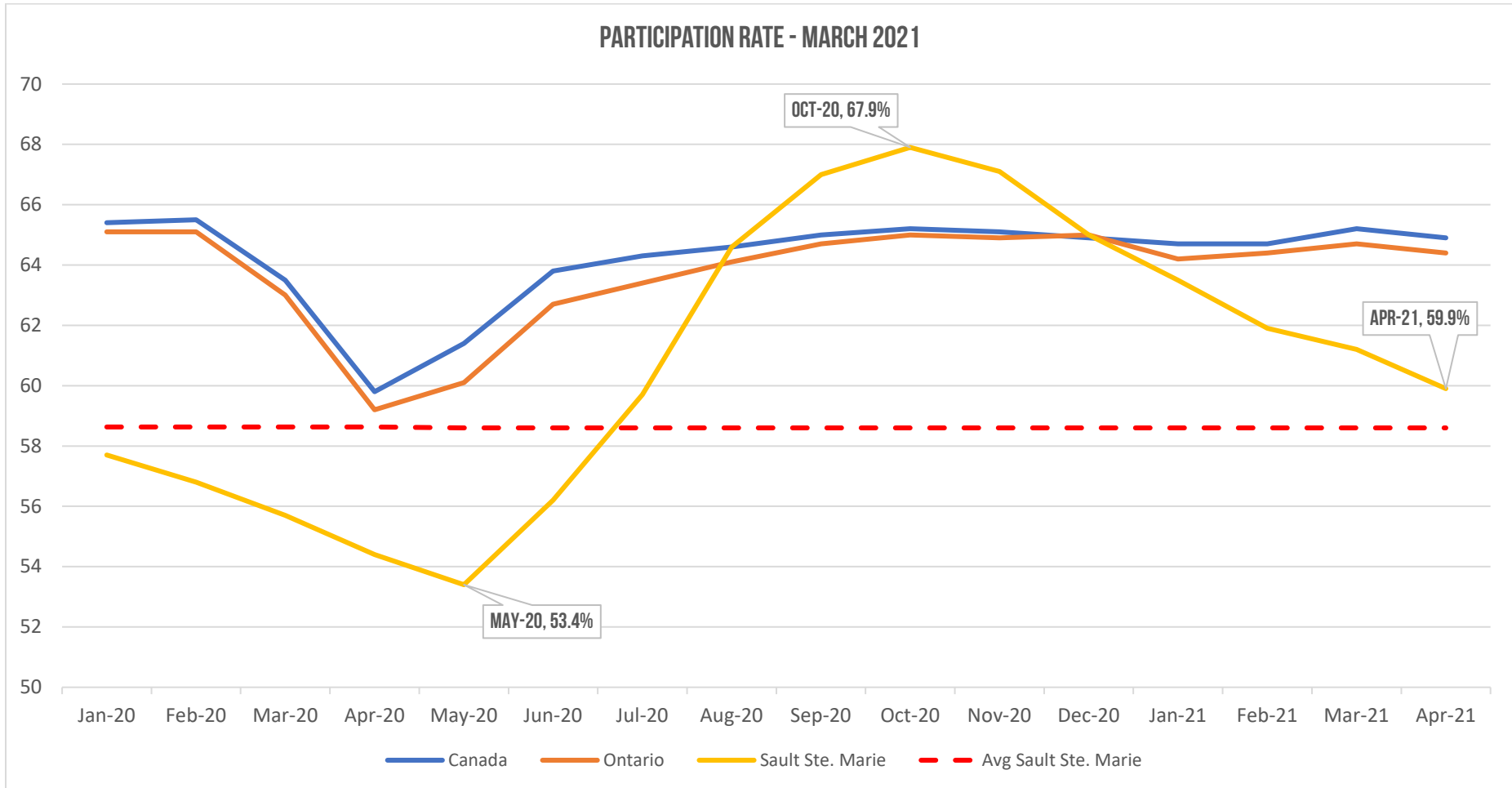


Unemployment Rate

- Sault Ste. Marie’s unemployment rate in April 2021 was 6.7% (Canada 8.1%, Ontario 9.0%)
- This represents an increase from 5.1% in February 2021, but still significantly lower than a high of 11.1% in July.
- In March 2020, the unemployment rate was 5.1% and then climbed significantly as a result of the COVID 19 precautions.
- The national and provincial rates also spiked due to COVID and have been recovering steadily over the past 3 months, but have risen as a result of the latest restrictions in March.
- Sault Ste. Marie’s Labour Force Survey results are based on 3-month rolling average. Therefore, the Unemployment rate is an average of the previous 3 months.

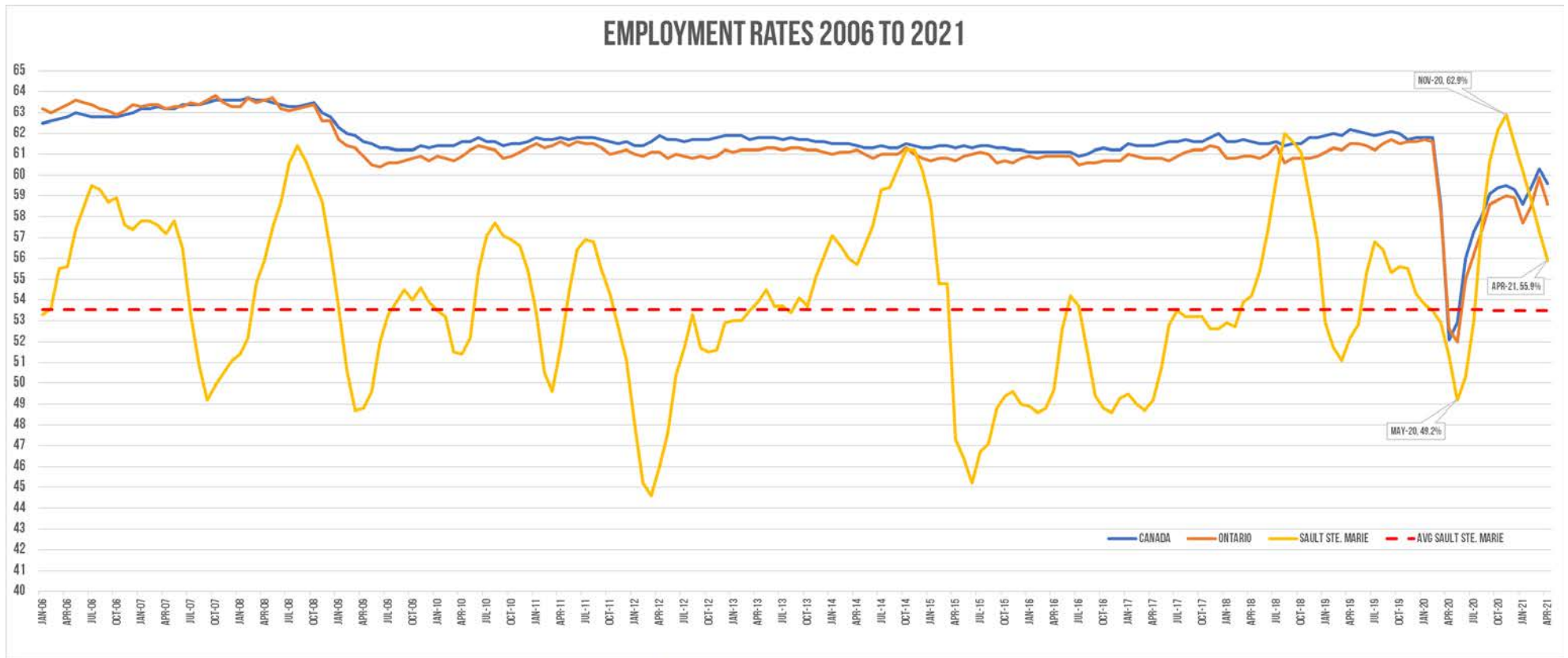


- It should be noted that along with the falling Unemployment Rate, Sault Ste. Marie’s Participation Rate has fallen since October which means that fewer people are working or actively looking for work.
- This is not unexpected as the first part of the year typically has lower Participation Rates and then increases as we move into the summer season.



Employment Rate

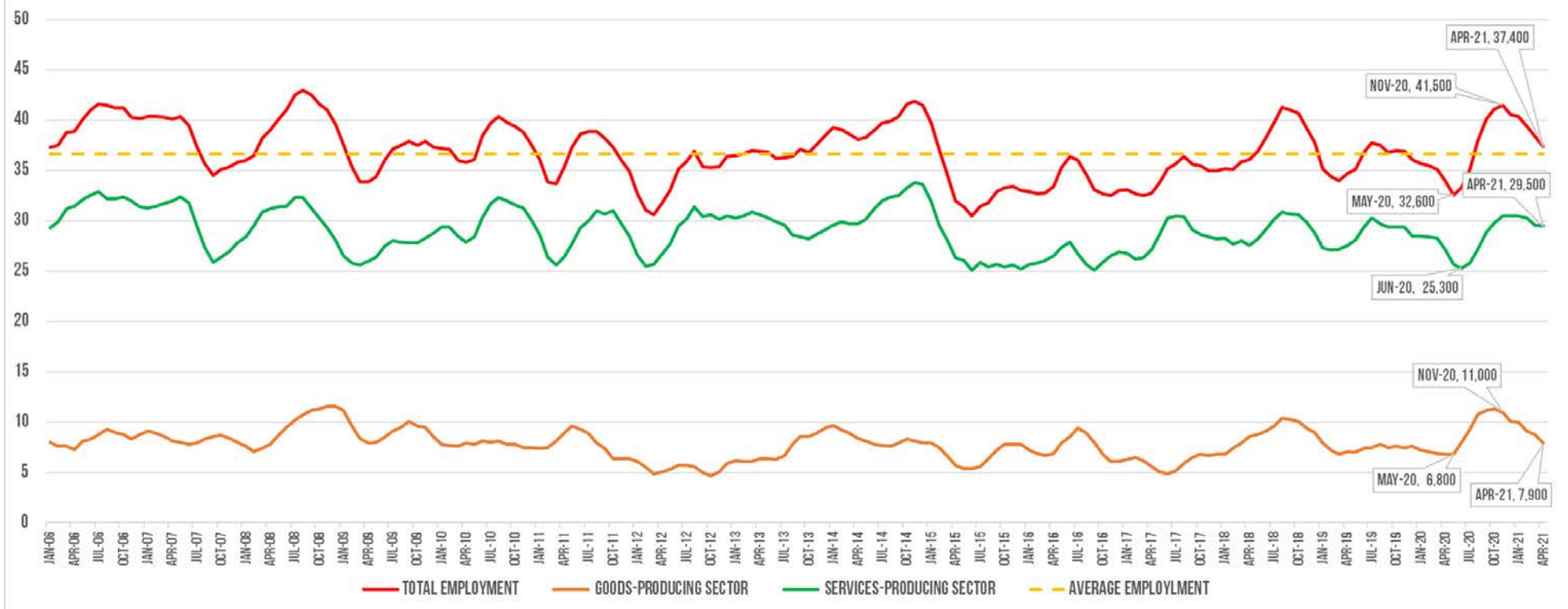
- Sault Ste. Marie's employment rate in April 2021 was 55.9%. (Canada 59.6%, Ontario 58.6%)
- The employment rate has rebounded from a low of 49.2% in May 2020 but fell from a high of 62.9% in November 2020.
- The national and provincial rates have also rebounded from earlier lows, but they are still lower than previous norms.
- Traditionally, in pre-COVID years, the first part of the year is a time of lower employment rates. As we move towards to the summer months, we will want to see increases in employment levels as more people look to enter the Labour Market.



Employment Numbers

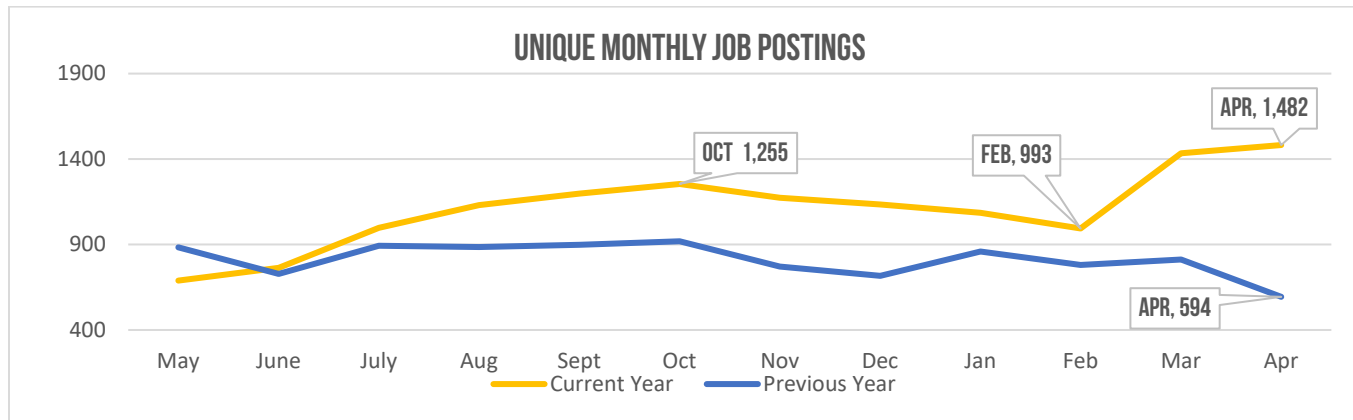
- Overall Employment in Sault Ste. Marie fell slightly to 37,400 jobs in January from a high of 41,500 in November 2020. (The average level of employment over past 20 years is 36,700)
- Employment has rebounded from a low of 32,600 in May 2020.
- Employment in the Goods-Producing Sector fell to 7,900, which is still higher than pre-COVID levels and higher than overall employment numbers in 2019. We would expect this number begin to rise as we move into the summer months, which sees an increase in construction activity.
- Employment in the Services-Producing Sector has also increased to 29,500 from a low of 25,300 in June. Employment in the Services-Producing Sector has also reached pre-COVID levels.

EMPLOYMENT LEVELS 2006 TO APRIL 2021



Job Postings

- Online job postings in Sault Ste. Marie have risen significantly since February.
- As you might expect there is consistent demand for healthcare, essential retail and delivery related occupations.
- There is also an increase in postings related to seasonal and summer work such as construction and student/summer related jobs.
- In a sign of the times, postings for teaching related occupations made the top 10 as tutoring platforms and school boards outside of the region are looking for resources to teach/support online learning.



Top 10 Postings by Job Title

- APRIL 2021**
- Personal Support Workers
 - Teachers
 - Registered Practical Nurses
 - Registered Nurses
 - Delivery Drivers
 - General Laborers
 - Sales Associates
 - Support Workers
 - Assistant Store Managers
 - Cashiers

- 2020**
- Personal Support Workers
 - Security Guards
 - Registered Practical Nurses
 - Sales Associates
 - Administrative Assistants
 - Retail Sales Associates
 - Support Workers
 - Registered Nurses
 - Customer Service Representatives
 - Delivery Drivers

- 2019**
- Personal Support Workers
 - Sales Associates
 - Customer Service Representatives
 - Retail Sales Associates
 - Administrative Assistants
 - Delivery Drivers
 - Store Managers
 - Retail Merchandisers
 - School Bus Drivers
 - Cooks

How the Unemployment Rate is Calculated for Sault Ste. Marie

Sault Ste. Marie's monthly Labour Force Survey estimates are based on a sample of the working age population (the population 15 years and above). For example, the results in a typical month would be based on the survey completions of 205 households and these would be extrapolated for the entire working population of 66,500.

While labour force estimates are produced for Census Agglomerations such as Sault Ste. Marie, the Labour Force Survey sample is not allocated specifically at this level of geography. Sault Ste. Marie's data is captured within surveys of the entire North East region of Ontario. Regular sample rotation within the larger Economic Regions (ERs) that contain these communities may cause the sample size within CA boundaries to vary over time. As a result, data level movements may be due to real change, or they may be due to data variability from changes in sample size. Users are encouraged to use the employment rate and participation rate as their main variables of analysis. These estimates are the most reliable, while other estimates should be interpreted with caution.

Emsi Job Postings

Job postings are collected from various sources and processed/enriched to provide information such as standardized company name, occupation, skills, and geography.