

**OCCUPATION  
HIGHLIGHTS**

**#2** OCCUPATION IN THE  
HEALTHCARE & SOCIAL  
ASSISTANCE SECTOR  
(14% of all jobs in the sector)

Number of jobs 2017  
**1,205**

CHANGE IN # OF JOBS  
**2016 - 2017**  
**1%**

Median Earnings (2017)  
**\$19.92/hr**

Earnings Range (2017)  
\$16.93/hr → \$21.95/hr

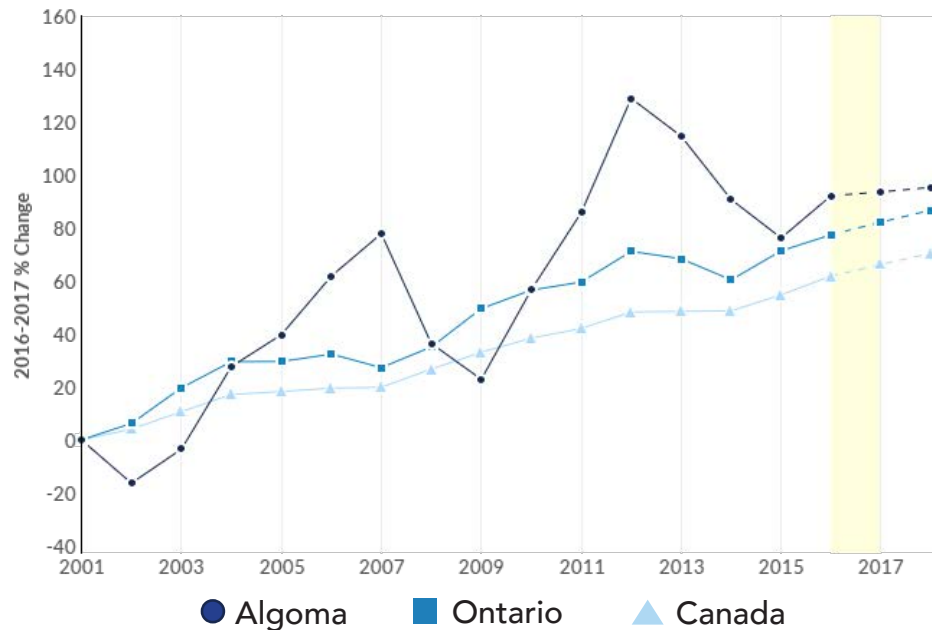
**Aging Workforce**  
18% Over the age of 45

**Gender**

87% Female 11% Male

**NURSE AIDES, ORDERLIES, & PATIENT  
SERVICE ASSOCIATES  
NOC 3413**
**Nurse Aides, Orderlies, & Patient Service  
Associates**

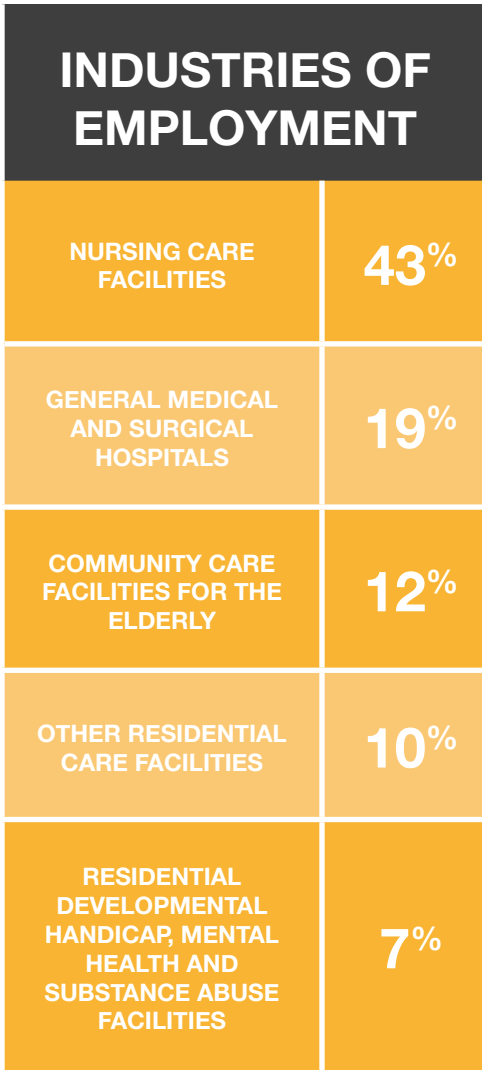
Nurse aides, orderlies and patient service associates assist nurses, hospital staff and physicians in the basic care of patients. They are employed in hospitals, nursing homes, assisted care facilities for the elderly and other health care establishments.

**Employment Trends**


REGION	2016 JOBS	2017 JOBS	CHANGE	% CHANGE 2016 - 2017	MEDIAN HOURLY EARNINGS
Algoma	1,196	1,205	9	1%	\$19.73
Ontario	92,737	95,220	2,483	3%	\$19.85
Canada	270,960	278,311	7,351	3%	\$19.55

## Job Titles

- Resident care aide
- Health care aide
- Hospital attendant
- Long term care aide
- Nurse aide
- Nursing attendant
- Orderly
- Patient care aide
- Patient service associate
- Psychiatric aide



## What Are The Typical Job Duties?

- Answer call signals; supply and empty bed pans; bathe, dress and groom patients; serve meal trays, feed or assist in feeding of patients and assist patients with menu selection; lift, turn or massage patients; shave patients prior to operations; supervise patients' exercise routines, set up and provide leisure activities for patients, and accompany patients on outside recreational activities; and perform other duties related to patient care and comfort
- Take patients' blood pressure, temperature and pulse; report or record fluid intake and output; observe or monitor patients' status and document patient care on charts; collect specimens such as urine, feces or sputum; administer suppositories, colonic irrigations and enemas and perform other procedures as directed by nursing and hospital staff
- Transport patients by wheelchair or stretcher for treatment or surgery
- Carry messages, reports, requisitions and specimens from one department to another
- Make beds and maintain patients' rooms
- Maintain inventory of supplies
- May perform maintenance tasks such as assisting with the set-up and maintenance of traction equipment, cleaning or sterilizing equipment, maintaining and repairing equipment, and assembling, setting-up and operating job-related equipment.

## Campus Based Courses Available In Algoma

- Collaborative Bachelor of Science in Nursing (Sault College)
- Pre-Health Sciences (Confederation College, Sault College)

## Nurse Aides, Orderlies, etc. In Algoma

REGION	2016 JOBS	2017 JOBS	2016 - 2017 CHANGE	2016 - 2017 % CHANGE
Sault Ste. Marie	950	954	4	0%
Elliot Lake	104	106	2	2%
Blind River	43	46	3	7%
Thessalon	22	22	0	0%